

## MANAGEMENT INFORMATION SYSTEM CONCEPT LAYOUT ORIENTATION PSYCHIATRIC HOSPITAL

**Vero Hari Aldino<sup>1</sup>**  
Nurul Hasanah Kutacane University <sup>1</sup>

### **ABSTRACT**

The general point that I want to see from the review of this paper is to know the profile of the Special RSJD. To know the definition of a psychiatric hospital. This research method uses a descriptive literature review approach. The results of the study are that the health care of those with mental disorders is needed to restore their mental health so that they can live a good life. So adequate health care units are needed to help in achieving a normal life, to help the care of patients with mental illness with various types of services available and various health resources that help in the achievement of optimal health for patients.

**Keywords:** Concept, Management Information Systems, Psychiatric Hospital

**Correspondence:** Vero Hari Aldino, S.Kom., M.Kom, Kutacane. Email:  
[vero.jambak@gmail.com](mailto:vero.jambak@gmail.com)

## INTRODUCTION

This mental disorder still has a negative stigma from society. The word "crazy" is often applied to people with mental disorders. This means that sufferers are often not treated properly. However, if treated properly, people with this mental disorder can be cured. Mental disorders can be categorized into two. Namely serious mental disorders such as schizophrenia and mental retardation. Meanwhile, mild and moderate ones include emotional, depressed and anxious. Schizophrenia is a chronic mental illness that causes thought process disorders. People with schizophrenia cannot differentiate between fantasy and reality. Disturbed thought processes give rise to hallucinations, delusions, unclear thoughts, as well as acting out, unnatural speech and excessive anxiety ( Putri & Suwadnyana, 2020 ).

According to the results of the Ministry of Health's Basic Health Research (Riskesdas). Republic of Indonesia year 2018, estimated 1-2 person Every 1,000 Indonesians suffer from serious mental disorders, including schizophrenia, and almost 15 percent of sufferers experience shackling and people who experience depression over 15 years reach 6 percent of 100 people. However, only 9 percent received treatment, so it is important to have a mental health service unit ( Putri & Suwadnyana, 2020 ).

Regional Mental Hospitals as stipulated regarding the Main Duties, Functions and Work Procedures of Regional Mental Hospitals have the task of carrying out provincial government affairs in the field of mental services with superior handling abuse Drugs or drug dependence in accordance with applicable laws and regulations. Carrying out these service tasks requires well-organized management conditions. Because there is no success in health development without management support Good. Process management covers planning, organizing, implementing, controlling and evaluating so that the activity stages of all programs can run effectively and efficiently and can be accounted for to the public.

### Formulation Problem

As for formulation problem Which lifted in paper This, that is:

1. How definition House Sick soul?
2. What's the picture? general specification House Sick soul?
3. How type service health?

General purpose:

The general aim that we want to see from the creation of this paper is to know the profile of the RSJD

Special:

- a. For know definition of home mental illness
- b. For know description general specification House Sick soul
- c. For know type service health

## **LITERATURE REVIEW**

Management information systems basically function to provide information to managers and leaders about the organization's previous and current performance, as well as its environment and future projections. Information system functions include collecting, processing, storing and sending data to managers and leaders (Ratnaningtias, 2024).

Information systems have developed very quickly and have proven to be very important for economic activities and development strategies. The existence of information systems helps the government and business world become more efficient, effective and productive, and helps build an advanced and prosperous society (Syahril, 2024).

Management information systems (MIS), also known as information management systems (MIS), are built to collect, store, and disseminate data, which is the information necessary to carry out various management functions (Alacsel, 2023).

## **METHOD**

To answer the research question, which was determined previously, this research used a descriptive literature review approach. The purpose of this research is to find, assess, and understand all results related to the research topic. Secondary data used in this research comes from national and international scientific articles from 2010–2020. Google Scholar, PubMed, and Science direct were the data sources used.

Researchers begin by determining the topic of the literature review and selecting inclusion and exclusion criteria. Next, they find research keywords. In the next step, the author will collect and select articles that are relevant to the literature review topic. They

will use keywords in Indonesian and English, such as roles, parents, prevention, device addiction, children, and add the binary logic "OR" and "AND".

## **RESULTS AND DISCUSSION**

### **Definition House Sick Soul**

House Sick soul is Wrong One House Sick special which cares for patients with mental disorders and organizes service, education and research activities. In accordance with the Minister of Health Regulation Number 2356/MENKES/PER/XI/2011 concerning the position of hospitals within the ministry of health, mental hospitals in carrying out technical functional duties of the main director of the house Sick built by Directorate build health soul (Antony, Azizah, & Kahayani, 2016; Putri, 2019).

The mental health component according to Minister of Health Decree Number 135/Menkes/SK/IV/78, states that mental health services include component service medical psychiatric, service medical support, rehabilitation and care services. These services are carried out through outpatient, inpatient, emergency care and rehabilitation care units, in addition to paying attention to physical disorders in mental patients. Mental hospital as a service center health soul in carry out efforts preventive, curative, rehabilitative, service keswa public in implement a referral system. In the organo- psychosocial process, activities reach into society (Putri, 2019)

### **Description General Specification House Sick Soul**

Mental Hospitals are different from General Hospitals according to PPDGJ (Guidelines for the Classification and Diagnosis of Mental Disorders), namely:

- a. Patient consists from person Which behave abnormal even though he is physically healthy
- b. There are three stages of healing, namely physical, mental and social treatment.
- c. Needed spaces together (more tend is a ward) both for treatment and for socializing

- d. It needs it room For therapy And rehabilitation Which done indoors
- e. Land Which wide For provision land for therapy Work fields such as agriculture, plantations, and other outdoor therapies (Putri, 2019)

### **Task Tree And Function RSJD**

The main tasks of the Sungai Bangkong Regional Mental Hospital are: Carry out affairs Government Province in field mental services with excellence in handling drug abuse or drug dependence in accordance with applicable laws and regulations. The functions in carrying out the main tasks include:

Formulation of technical policies in the field of mental health services and handling drug abuse or drug dependence

1. Preparation of the formulation and determination of technical policies in the fields of medical services, medical and non-medical support and nursing
2. Providing support and organizing regional government affairs in the field of mental health services and handling drug abuse or drug dependence in accordance with statutory regulations
3. Implementation of public services in the field of mental health and drug abuse in accordance with statutory regulations
4. Maintenance service treatment, maintenance And rehabilitation for mental disorders with superior care and rehabilitation services for victims of narcotics and illegal drug addiction
5. Maintenance activity reference medical, specimens And clinical services for mental disorders and drug users/addicts
6. Organizing Educational Information Communication (KIE) for mental disorder patients and drug addicts and their families
7. Maintenance monitoring And evaluation And reporting towards former mental patients and drug addicts

8. Maintenance facilitation And coordination with units Work related to the handling of mental patients and drug addicts as well as community development regarding the dangers of mental disorders and drug use
9. Organizing monitoring, evaluation and reporting on the implementation of mental hospital duties
10. Management of personnel administration, finances and assets within the Mental Hospital environment
11. Carrying out deconcentration tasks, other tasks in the field of psychiatric services and overcoming drug abuse and drug addiction as handed over by the Governor.

### **Structure Organization**

Structure Organization House Sick Soul Area River Bangkok, consist of :

Director

Has the task of leading, developing, coordinating, organizing, supervise, Evaluate And control the activities of the Sungai Bangkok Regional Mental Hospital in accordance with applicable laws and regulations

Sub Part Administration

Has the task of preparing materials for formulating technical policies in the fields of work plan preparation, monitoring and evaluation, administration staffing, general, as well as management finance and assets, Sungai Bangkok Regional Mental Hospital

Sexy Service Medic

Have task carry out coordination, give instructions and guidance technical service medical in accordance scope task Service Section Medic in environment House Sick Soul Area Bangkok River .

Sexy Support Medic and Non- Medical

Have task carry out coordination, give instructions and technical guidance for medical and non-medical support according to the scope of the Medical and Non-Medical Support Section within the Sungai Bangkok Regional Mental Hospital

Sexy Nursing

Have task carry out coordination, give Nursing technical instructions and guidance

according to the scope of the Nursing Section within the Sungai Bangkok Regional Mental Hospital

Committee Medic

Has the task of assisting the Director in developing service standards medical, monitor implementation, carry out professional ethics development, regulate the professional authority of functional medical staff members and develop service programs

Installation

Has the task of assisting the Director in providing functional services according to his function directly by utilizing existing resources effectively and efficiently

Committee Nursing

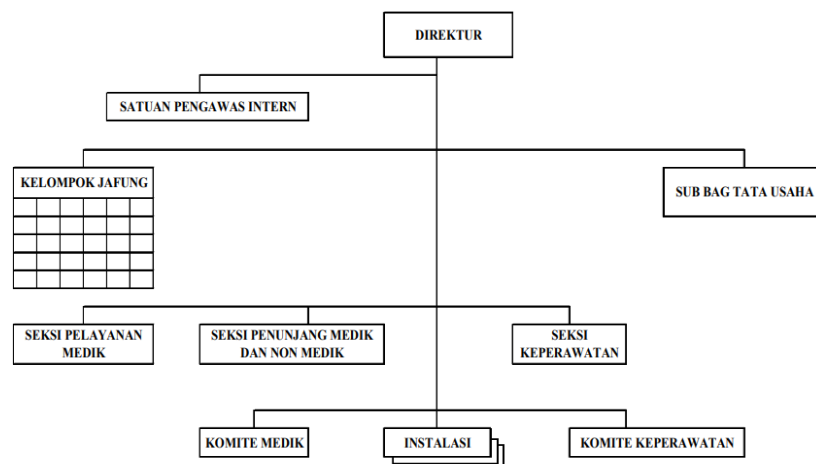
Has the task of assisting the Director in compiling nursing standards, developing nursing care, carrying out nursing professional ethics development.

Unit Internal Supervisor

Is a functional group tasked with carrying out supervision to management source Power House Sick The Soul of the Bangkok River Region.

Group Position Functional

Tasked with carrying out certain technical activities based on expertise and skills.



**Chart** : Structure organization House Sick Soul Area

**Source Power Man in RSJD**

RSJD Sungai Bangkong, West Kalimantan Province is supported by Human Resources (SDM) which consists of 2 (two) parts, namely Civil Servants Civil (PNS) And Employee No Still (PTT) Which still employed as long as it does not conflict with applicable personnel regulations with a total of 259 employees consisting of 195 civil servants and 64 non-permanent employees (PTT) contract workers. The division into Civil Servant positions:

- i. The position of Administrator is Director
- ii. Position Supervisor, Which consists from :
  - 1) Head Sub Administration
  - 2) Head Sexy Service Medic
  - 3) Head Sexy Support Medic And Non Medical
  - 4) Head Sexy Service Medic
- iii. Position functional Which consists from :
  - 1) Archivist
  - 2) Administration Health
  - 3) Personnel Analyst
  - 4) Doctor Specialist
  - 5) Doctor General
  - 6) Doctor Tooth
  - 7) psychologist Clinical
  - 8) Counselor Public health
  - 9) Physiotherapist
  - 10) Nurse
  - 11) Nurse Tooth
  - 12) Pharmacist
  - 13) Assistant Pharmacist
  - 14) Institution Laboratory Health
  - 15) Radiographer
  - 16) Nutritionist

17) Sanitarian

18) Electromedical Technician

General Practitioner, Nurse, Counselor, Administration, Pharmacist Assistant, Lab Staff, Health, Radiographer, Physiotherapist, Medical Record, Psychologist, etc.

The number of Civil Servant workers is depicted in the following table:

**Type Service Health**

iv. Service Health Soul

- Treat Stay
- IGD (Installation Emergency )
- UPIP (Units Maintenance Psychiatric Intensive )
- MPKP (model practice nursing professional)
- Treat stay man and women
- Installation Psychiatric Rehabilitation

v. Treat Road

- Polyclinic Dewalu (mature And elderly )
- Polyclinic GMOs (Disturbance Mental Organic)
- Geriatric Polyclinic
- Service SKJ (Letter Health Soul)
- Service SKBN (Letter Information Free Drugs)
- Service Health To Abuse DRUG

vi. Rehabilitation Inpatient

- IPWL (Installation Recipient Must Report)
- Counseling Rehabilitation Drugs
- Rehabilitation method T.C (Therapy Community).
- Detoxification

vii. Rehabilitation Treat Road

- DRUG POLY
- PTRM (Program Therapy Remedy methadone)

viii. Child and Adolescent Mental Health Services Therapy for children with need special with method ABA (Applied Behavior Analysis) which includes

- Therapy behavior
- Therapy sensory integration
- Therapy speech
- Therapy occupation
- ix. Service Health HIV AIDS
  - VCT (Voluntary Counselling and Testing)
  - CST (Care Support & Treatment)
- x. Psychology Poly
  - Consultation Psychology
  - Test IQ and Personality
  - Test interest talent
  - Test selection employee
  - Test promotion position
  - Training Psychology
  - Speaker Seminar
- xi. Installation Health Soul Public (Swamas)
  - Hotlines Service
  - Counseling health soul
  - Promotion Health Soul Public
  - Health Community Spirit
  - Measurement Survey Community Satisfaction
  - Measurement Survey Satisfaction Employee. Promotion Hospital Health
- xii. Service Support
  - Dental clinic
  - Clinic Nutrition
  - Installation Laboratory (hematology routine, chemistry clinic, serology, HIV-AIDS examination, and drug examination)
  - Installation Physiotherapy
  - EEG / Brain Mepping

- Radio Dental Diagnostics
- Inspection MMPI.

## CONCLUSION

Health services for those who have mental disorders are needed to restore their mental health so they can live a good life. So that the health service unit adequate required For help in reach normal life, therefore the regional government of West Kalimantan Province facilitates the existence of RSJD Sungai Bangkong, West Kalimantan Province to help care for patients with mental disorders with various types of services available and various health workers. Which help in reach health Which optimal for patients

## REFERENCES

- Antoni, A., Azizah, G., & Kahayani, D. T. (2016). Tinjauan Kelengkapan Diagnosis Visum Et Repertum Psikiatrik di Rumah Sakit Jiwa Daerah Sambang Lihum Tahun 2015. *Jurkessia*, 4(1), 32-38.
- Putri, D. A., & Suwadnyana, I. W. (2020). *Komunikasi Terapeutik: Strategi Pemulihan Pasien Gangguan Jiwa (Skizofrenia) Berdasarkan Prespektif Ajaran Agama Hindu Di Rumah Sakit Jiwa Provinsi Bali*. Bali: Nilacakra.
- Putri, M. R. (2019). Rumah Sakit Jiwa Tipe A Dikota Semarang Dengan Pendekatan Desain Healing Environment. *Program Studi Teknik Arsitektur Jurusan Teknik Sipil, Fakultas Teknik, Universitas Negeri Semarang*
- Alacsel, Sanjaya. (2023). Penerapan Sistem Informasi Manajemen pada PT. Prima Indonesia Logistik. *AKADEMIK Jurnal Mahasiswa Humanis*, 4(1), 122–131.
- Ratnaningtias, Dwi. (2024). Penerapan Sistem Informasi Persediaan Barang pada Klinik Kesehatan. *AKADEMIK Jurnal Mahasiswa Humanis*, 4(1), 96–103.
- Syahrial, Alas Putra Pagan. (2024). Pengelolaan dan Pengembangan Sistem Informasi Manajemen di Kantor Polisi. *AKADEMIK Jurnal Mahasiswa Humanis*, 4(1), 132–139.
- Situmorang, Dokman Marulitua. (2019). the Effect of Taxpayer Awareness and Fiskus Service on Performance of Tax Revenue With Taxpayer Compliance As Intervening Variables. *Management and Sustainable Development Journal*, 1(1), 26–37. <https://doi.org/10.46229/msdj.v1i1.98>